



School Curriculum  
and Standards  
Authority



# Year 10 Information Handbook

For more information go online: [www.scsa.wa.edu.au](http://www.scsa.wa.edu.au)

© School Curriculum and Standards Authority, 2020

This document—apart from any third party copyright material contained in it—may be freely copied, or communicated on an intranet, for non-commercial purposes in educational institutions, provided that the School Curriculum and Standards Authority is acknowledged as the copyright owner, and that the Authority’s moral rights are not infringed.

Copying or communication for any other purpose can be done only within the terms of the Copyright Act 1968 or with prior written permission of the School Curriculum and Standards Authority. Copying or communication of any third party copyright material can be done only within the terms of the *Copyright Act 1968* or with permission of the copyright owners.

Any content in this document that has been derived from the Australian Curriculum may be used under the terms of the [Creative Commons Attribution-Non Commercial 4.0 Australia licence](#).

**School Curriculum and Standards Authority**

Street address: 303 Sevenoaks Street CANNINGTON WA 6107

Postal address: PO Box 816 CANNINGTON WA 6987

Phone: (08) 9273 6300

General email: [info@scsa.wa.edu.au](mailto:info@scsa.wa.edu.au)

Web: [www.scsa.wa.edu.au](http://www.scsa.wa.edu.au)

HPRM: 2020/24890v6

# Year 10

## Information Handbook

### 2020

Student name: .....

WA student number:.....

Before you read further, remember the following:

Abbreviation	Full term
ATAR	Australian Tertiary Admission Rank
OLNA	Online Literacy and Numeracy Assessment
the Authority	School Curriculum and Standards Authority
TISC	Tertiary Institutions Service Centre
VET	Vocational Education and Training
WACE	Western Australian Certificate of Education
WASSA	Western Australian Statement of Student Achievement

## Foreword

I recognise that this year has had a disrupted start and many of you have participated in a learning-from-home program during parts of Terms 1 and 2. This may have involved an online program of work or hard copy packs of work. I trust that you have continued to engage in the learning program your teachers have presented to you and that you have kept in regular contact with them.

In acknowledging that the experience of this year's disruption will not have been the same for all students, I think we have all learnt more about ourselves and our world in recent times. In reflecting on your experience, I would urge you to consider the value of staying in touch with your teachers and peers. Consider also what you may have learnt about working independently and how you work best. How can you use these understandings as you move forward?

As you make your plans for 2021, I acknowledge that your learning program may have been modified to suit a learning-from-home environment. Assessments have needed to be authenticated when you returned to school. For some practical subjects, your course work is likely to have focused on aspects of the curriculum that did not require specialised materials or facilities. Throughout the events of this year, the Authority has worked from the premise that no student should be disadvantaged. To this end, your school will have worked to keep your learning and assessment program on track to lead you into Years 11 and 12.

We want all students to enrol in a challenging senior secondary program for 2021, suited to your strengths and interests. It is important that you know that, despite the disruptions and challenges COVID-19 has brought, the standard of the Western Australian Certificate of Education (WACE) has not dropped. Although this year has thrown up many challenges, it has equally opened doors to new opportunities. Consider these opportunities when making your selections.

To be awarded a WACE, students must meet a number of requirements. The first of these is a set of general requirements about course completion. Other requirements include demonstrating the literacy and numeracy standard, the breadth and depth requirement and the achievement standard requirement. All requirements must be met for a student to be awarded a WACE.

Many of you will have already met the literacy and numeracy standard through your Year 9 NAPLAN results or the first round of the Online Literacy and Numeracy Assessment. If not, there will be further opportunities this year and in Years 11 and 12 to do so.

Students entering Year 11 in 2021 have **three** options for the course completion requirement to achieve the WACE. These options are detailed as part of the information presented in this handbook. As you consider which will be the best option for you and begin the process of selecting your courses for Years 11 and 12, you should talk with your parents and teachers about the courses and programs that will work best for you. Bear in mind that you want your options during and after school to meet your needs, interests and aspirations.

You are about to enter into a phase of your life that will bring both challenges and rewards. However uncertain the times may be, by seeking sound advice, making wise choices and establishing good routines you will be helping yourself achieve your goals. I wish you all the best for your senior secondary studies.

**ALLAN BLAGAICH**  
**EXECUTIVE DIRECTOR**  
**SCHOOL CURRICULUM AND STANDARDS**

**T**his handbook contains information for students currently enrolled in Year 10. It provides a reference point for studies in Year 11 and Year 12 and, in particular, for the WACE.

Further information and advice is also available to you and your parents from school staff, such as counsellors, year coordinators, VET coordinators and deputy principals.

## The Western Australian Statement of Student Achievement (WASSA)

The WASSA is issued to each Year 12 student at the completion of their senior secondary schooling; senior secondary school typically takes two years. The WASSA lists all courses and programs that a student has completed and the grades and marks achieved.

The WASSA formally records, as relevant:

- achievement of WACE requirements
- achievement of the literacy (reading and writing) standard
- achievement of the numeracy standard
- achievement of any exhibitions and awards
- school grades, school marks and combined scores in ATAR courses
- school grades and school marks in General and Foundation courses
- completed Preliminary units
- completed VET industry specific courses
- successfully completed VET qualifications and VET units of competency
- completed endorsed programs
- number of community service hours undertaken (if reported by the school).

## The Western Australian Certificate of Education (WACE)

The WACE is awarded by the School Curriculum and Standards Authority (the Authority) when students successfully meet the WACE requirements.

### WACE achievement requirements

To meet the WACE achievement requirements, **you must**:

- demonstrate a minimum standard of literacy and a minimum standard of numeracy
- complete a minimum of 20 units, or equivalents as described below
- complete
  - at least four Year 12 ATAR courses\* **OR**
  - at least five Year 12 General courses<sup>†</sup> and/or ATAR courses or equivalent\* **OR**
  - a Certificate II<sup>‡</sup> (or higher<sup>§</sup>) VET qualification in combination with ATAR, General or Foundation courses.

\*In the context of ATAR courses in the WACE, the term 'complete' requires a student to sit the ATAR course examination or has an approved sickness/misadventure application for not sitting the examination in that course. Students who do not sit the ATAR course examination will not have a course mark or grade recorded on their WASSA, nor will they receive an ATAR course report. The pair of units will not contribute to any WACE requirements.

Note: for ATAR courses with practical components, students must complete both the written and practical examinations.

†Foundation courses do not contribute to meeting the WACE achievement requirement with this option. Students taking Foundation courses must complete a Certificate II or higher.

‡In the context of VET in the WACE, the term ‘complete’ requires that a student has been deemed competent in all units of competency that make up a full qualification.

§The partial completion of a Certificate III or higher VET qualification may meet this requirement according to predetermined criteria (see the [WACE Manual](#) for further information).

### Literacy and numeracy standard requirement

You must demonstrate the minimum literacy and numeracy standard based on skills regarded as essential for individuals to meet the demands of everyday life and work. This standard is equivalent to Level 3 of the Australian Core Skills Framework (<https://www.education.gov.au/australian-core-skills-framework>).

For the WACE literacy standard, you must demonstrate the minimum standard of literacy either by successfully completing the literacy components of the Authority’s Online Literacy and Numeracy Assessment (OLNA) in Year 10, or subsequently, **or** by pre-qualifying through achieving Band 8 or higher in the reading and writing tests of the Year 9 National Assessment Program – Literacy and Numeracy (NAPLAN).

For the WACE numeracy standard, you must successfully complete the numeracy component of the OLNA in Year 10, or subsequently, **or** by pre-qualifying through achieving Band 8 or higher in the numeracy test of Year 9 NAPLAN.

This means that, if you have achieved Band 8 or above in the reading, writing or numeracy component of the Year 9 NAPLAN you will be considered to have **pre-qualified** for that component and do not need to sit the OLNA for that component.

### Sitting the OLNA

If you **have not** pre-qualified in reading, writing or numeracy you are required to sit the corresponding component/s of the OLNA in Semester 1 of Year 10. If you do not meet the standard in Semester 1, then you must sit the OLNA in Semester 2 of Year 10, and, if required, in Semester 1 of Year 11. You will have up to six opportunities (in March and September of each year) before completing Year 12 to demonstrate the WACE minimum standard of literacy and numeracy.

If you do not achieve a WACE while at school because you do not demonstrate the standard in one or more of the reading, writing or numeracy components, you can apply to re-sit the necessary test/s. If you subsequently demonstrate the literacy (reading and writing) and numeracy standard and meet all the WACE requirements current at the time, you will be issued with a WACE.

### International and mature-age students

If you are an international and/or mature age student, you are required to sit the OLNA at the first available opportunity. If you **have not** pre-qualified through NAPLAN and, choose **not** to sit the OLNA, you will **not** qualify for the WACE.

### Adjustments

If you have a condition/s that may significantly limit your capacity to participate in the OLNA, disability adjustment provisions for timed assessments are available. For information about the adjustment provisions, see <http://senior-secondary.scsa.wa.edu.au/assessment/olna/disability-adjustments>.

If you are a student with a disability or have additional needs and choose not to sit the assessment or have not demonstrated the standard through your performance in Year 9 NAPLAN, you will **not** qualify for the WACE. It is important that you and your parents/guardians/carers discuss your options with appropriate staff members at your school.

After discussions with your parents/guardians/carers, and the school, you may choose not to sit the OLNA. However, this means that you will not achieve a WACE.

### Breadth and depth requirement

To meet the breadth and depth requirement **you must**:

- complete a minimum of 20 units, which may include unit equivalents attained through VET and/or endorsed programs. This requirement must include at least:
  - a minimum of ten Year 12 units, or the equivalent
  - four units from an English course, post-Year 10, including at least one pair of Year 12 units from an English learning area course
  - one pair of Year 12 units from each of List A (arts/languages/social sciences) and List B (mathematics/science/technology) subjects.

### Achievement standard requirement

You must achieve at least 14 C grades or higher (or equivalents) in Year 11 and Year 12 units, including at least six C grades (or equivalents) in Year 12 units.

### Unit equivalents

The WACE requirement for at least 20 units and at least 14 C grades may be met partly through unit equivalents. These are units within VET and endorsed programs of at least 55 nominal hours. They are known as unit equivalents because they are considered equivalent to one unit of a Year 11 or Year 12 course.

You can obtain unit equivalents through VET qualifications and/or endorsed programs. The maximum number of unit equivalents available through VET and endorsed programs is four Year 11 units and four Year 12 units. You may obtain:

- up to eight unit equivalents through completion of VET qualifications, or
- up to four unit equivalents through completion of endorsed programs, or
- up to eight unit equivalents through completion of a combination of VET qualifications and endorsed programs, but with endorsed programs contributing no more than four unit equivalents (two Year 11 units and two Year 12 units).

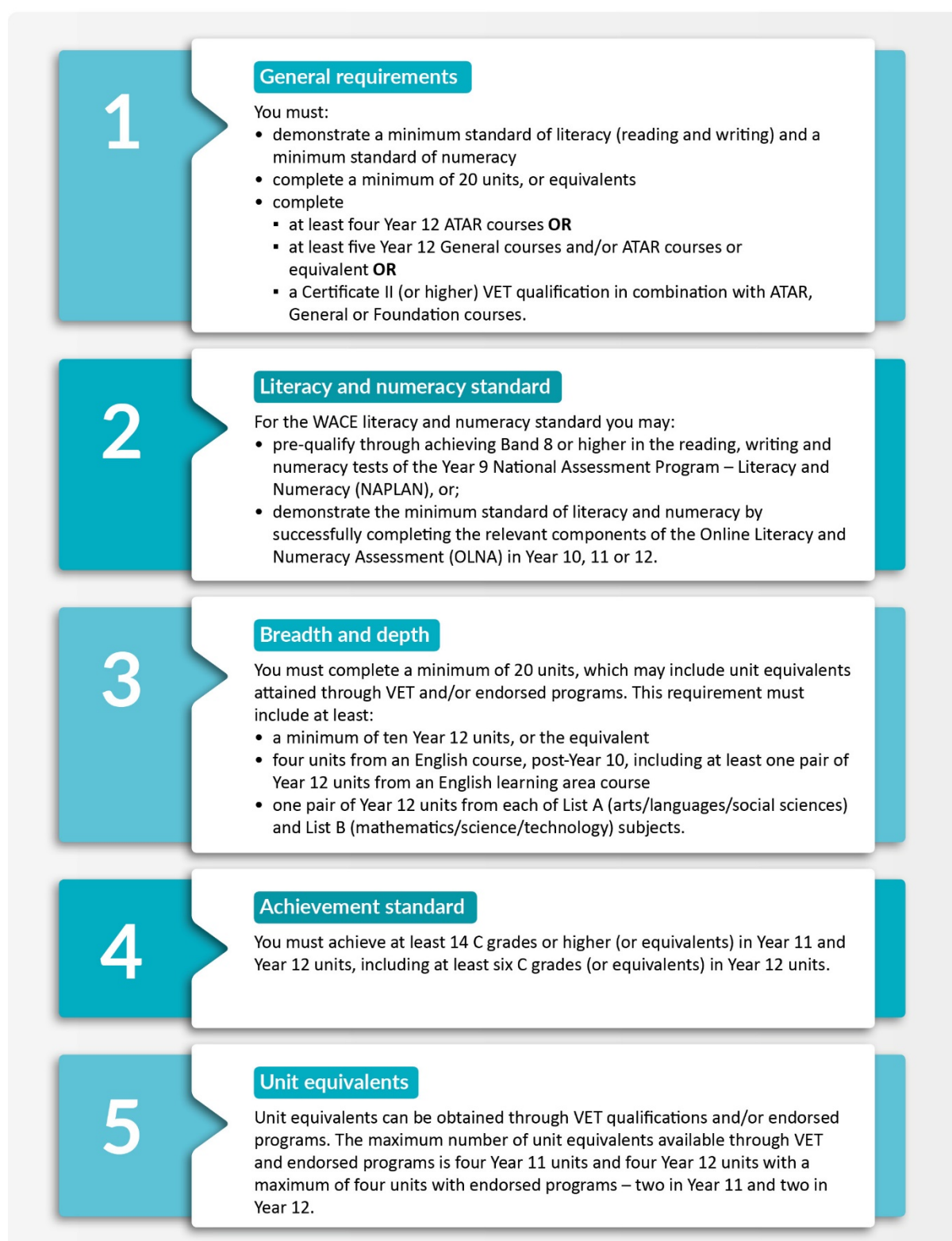
For VET qualifications:

- a Certificate I is equivalent to two Year 11 units
- a Certificate II is equivalent to two Year 11 and two Year 12 units
- a Certificate III or higher is equivalent to two Year 11 and four Year 12 units
- a partially completed Certificate III or higher is equivalent to two Year 11 and two Year 12 units (credit is allocated only if the criteria for partial completion are met). (See the [WACE Manual](#) for further information).

You can find unit equivalents for endorsed programs on the Authority's approved list of endorsed programs (see <https://senior-secondary.scsa.wa.edu.au/vet/endorsed-programs>).



Figure 1. WACE requirements 2021 and beyond





## Study options

Year 11 gives you the opportunity to choose courses that reflect your strengths and interests, and support your career aspirations. If you enjoy the courses you study, you are more likely to do well in them.

The Authority provides a wide range of courses and programs for Year 11 and Year 12 students. Schools make decisions about which courses and programs they will offer. These decisions are based on a range of factors, such as resources, staffing and community need.

There are four types of WACE courses – ATAR, General, VET industry specific and Foundation courses.

### WACE courses

#### **Australian Tertiary Admission Rank (ATAR) courses**

ATAR courses are designed for students who are typically aiming to enrol in a university course directly from school. These courses will be examined by the Authority and contribute to the achievement of an ATAR. You must sit the final examination to complete the course.

#### **General courses**

General courses are designed for students who are typically aiming to enter vocationally based training or the workforce directly from school. These courses will not be examined by the Authority. However, they each have an externally set task (EST) in Year 12 which is set by the Authority.

#### **Vocational Education and Training (VET) industry specific courses**

These courses are designed for students typically aiming to enter further vocationally based training or the workforce directly from school. They include a full Australian Qualifications Framework (AQF) qualification, mandatory workplace learning and contribute to the Certificate II requirement for a WACE. VET industry specific courses count towards your WACE as course unit credit, which allows you to include more VET in your secondary education program.

#### **Foundation courses**

Foundation courses are designed for students who have not been able to demonstrate the minimum standard of literacy and/or numeracy before Year 11 and are unlikely to do so before the end of Year 12 without significant levels of support.

These courses are not designed, nor intended, to be an alternative senior secondary pathway. They are not externally examined. However, they each have an EST in Year 12 which is set by the Authority.

These courses provide a focus on functional literacy and numeracy skills, practical work-related experience and the opportunity to build personal skills that are important for life and work.

The **only** students who may enrol in Foundation courses in Semester 1 of Year 11 are those who have not yet demonstrated the minimum standard of literacy and/or numeracy by the end of Year 10.

Students who have demonstrated the minimum standard of literacy and/or numeracy by the end of Year 10 **are not** eligible to enrol in the Foundation courses in Year 11.

Students who have not demonstrated the minimum literacy standard are permitted to enrol in both the List A and List B Foundation courses and, if the literacy standard is not achieved before the end of Semester 1 of Year 11, remain enrolled in Foundation courses until the end of Year 12.

Students who demonstrate the minimum standard of:

- literacy in Semester 1 of Year 11 are not eligible to continue in the List A Foundation courses in Semester 2 of that year
- numeracy in Semester 1 of Year 11 are not eligible to continue in the Foundation List B courses unless they are yet to demonstrate the minimum literacy standard
- literacy in Semester 2 of Year 11 or during Year 12 will be permitted to continue in Year 12 in Foundation English and their other List A and List B Foundation courses studied in Year 11
- numeracy in Semester 2 of Year 11 or during Year 12 will be permitted to enrol in Foundation Mathematics and other List B Foundation courses in Year 12.

A full list of courses and their codes is provided in the [WACE Manual](#).

If you enrol in a Foundation course in Year 12 from 2021, you must complete a Certificate II (or higher) to achieve your WACE. This is to make sure you are well prepared for the workforce or further training.

### Preliminary courses

The Authority also offers Preliminary courses for those students who have been identified as having a learning difficulty and/or an intellectual disability.

They provide a relevant option for students who:

- cannot access the ATAR, General or Foundation course content with adjustment and/or disability provisions
- have been identified as having a recognised disability under the *Disability Discrimination Act 1992* and meet the above criteria.

Preliminary courses **do not** contribute to achievement of the WACE. Students who meet the requirements of Unit Completion for Preliminary course units will have their progress documented in their WASSA.

## VET and endorsed programs

### General features of programs

The general features of the program types are summarised below.

#### VET

VET qualifications are for students wishing to participate in nationally recognised training. All VET qualifications require registered training organisation (RTO) delivery, assessment and quality control under the relevant VET regulatory body. A Certificate II or higher is one option for meeting the requirements to achieve a WACE. VET credit transfer can contribute up to eight of the 20 units you need to achieve your WACE. These qualifications contribute to the WACE as unit equivalents.

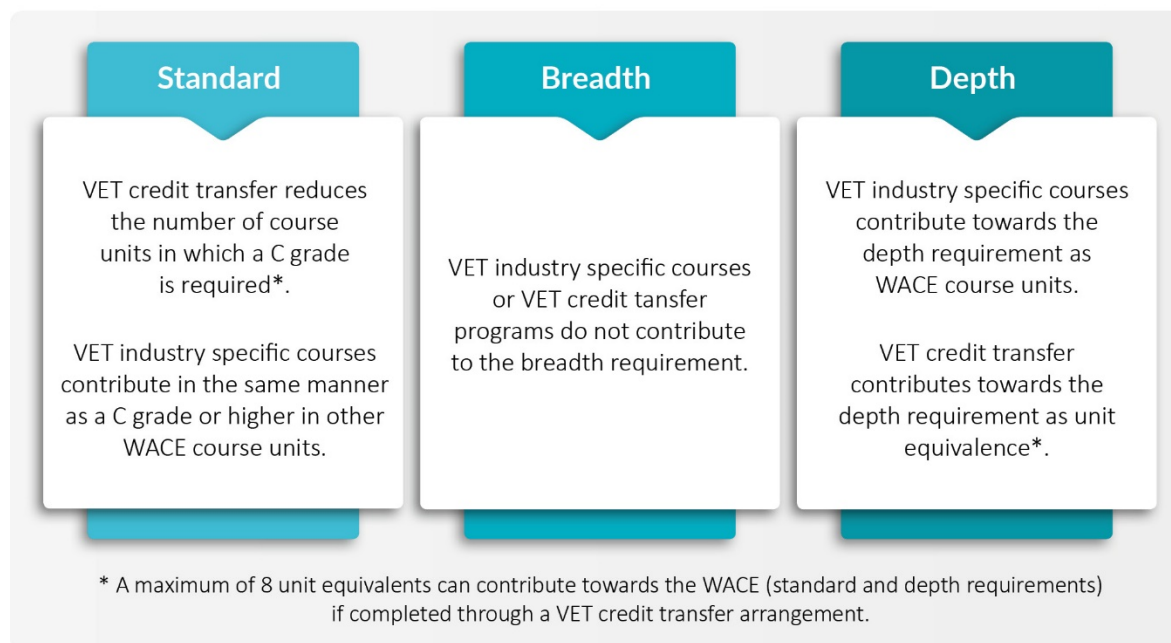
Students may have their VET achievements contribute to the WACE either as:

- a VET industry specific course
- VET credit transfer (the mechanism by which VET qualifications may be used to substitute for a specified number of WACE course units – see also unit equivalents)
- a combination of the above.

There are special circumstances in which a partly completed Certificate III or higher may meet the minimum requirement of a Certificate II.

For more information on how VET contributes towards your WACE visit the Authority's VET web page at <http://senior-secondary.scsa.wa.edu.au/vet/how-vet-contributes-towards-wace>. It is important you check with your school to confirm that your VET qualification will meet the requirements to contribute to the WACE.

**Figure 2. How VET contributes towards the WACE**



Note: VET qualifications **do not** contribute to the WACE breadth of study requirement because they are not identified as List A or List B subjects.

### Endorsed programs

These programs provide access to areas of learning not covered by WACE courses or VET programs and contribute to the WACE as unit equivalents. Endorsed programs may replace up to two Year 11 course units and two Year 12 course units you need to achieve your WACE.

Endorsed programs can be delivered in a variety of settings by schools, community organisations, universities, training organisations and workplaces.

The list of endorsed programs is available on the Authority website (<http://senior-secondary.scsa.wa.edu.au/vet/endorsed-programs>).

You should discuss endorsed programs opportunities with the appropriate staff member at your school.

## Examples of some study options for students

Table 1 shows examples of some study options for students. They do not represent the minimum requirements to achieve a WACE, which have previously been described.

**Table 1: Examples of study options**

Year of Study	ATAR	General	Foundation	Cert II + (unit equiv.)	Endorsed (unit equiv.)	Unit total (inc. unit equiv.)	ATAR Eligible	WACE Eligible
11	6	-	-	-	-	12	Y	Y
12	6	-	-	-	-	12		
11	4	2	-	-	-	12	Y	Y
12	4	1	-	-	1	11		
11	3	1	-	-	2	10	Y	Y
12	4	2	-	-	-	12		
11	2	3	-	-	-	10	N	Y
12	1	4	-	-	1	11		
11	-	5	-	-	1	11	N	Y
12	-	5	-	-	1	11		
11	-	4	2	-	-	12	N	N*
12	-	3	2	-	-	10		
11	-	2	2	2	-	10	N	Y
12	-	3	1	2	1	11		
11	1	2	-	4	-	10	N	Y
12	1	2	-	4	-	10		

### Note

\*Requires Certificate II

Calculation of an ATAR may be affected by conditions set by TISC (see Undergraduate Admission Requirements for School Leavers on the TISC website:

<http://www.tisc.edu.au/static/guide/admission-req-sleaver.tisc>).

Figure 3. Sample programs – WACE 2021



## Automotive



### Year 11

GEENG English  
 GEMAE Mathematics Essential  
 GEAET Automotive Engineering and Technology  
 FEAIT Applied Information Technology  
 Cert II Automotive Servicing Technology  
 ADWPL Workplace Learning

### Year 12

GTENG English  
 GTMAE Mathematics Essential  
 GTAET Automotive Engineering and Technology  
 FTAIT Applied Information Technology  
 Cert II Automotive Servicing Technology  
 ADWPL Workplace Learning

## Construction



### Year 11

GEENG English  
 GEMAE Mathematics Essential  
 GEBCN Building and Construction  
 GEECO Economics  
 Cert II Building and Construction  
 ADWPL Workplace Learning

### Year 12

GTENG English  
 GTMAE Mathematics Essential  
 GTBCN Building and Construction  
 GTECO Economics  
 Cert II Building and Construction  
 ADWPL Workplace Learning

## Health



### Year 11

GEENG English  
 GEHBY Human Biology  
 GEHEA Health Studies  
 GECFC Children, Family and the Community  
 Cert II Health Support Services  
 ADWPL Workplace Learning

### Year 12

GTENG English  
 GTHBY Human Biology  
 GTHEA Health Studies  
 GTCFC Children, Family and the Community  
 Cert II Health Support Services  
 ADWPL Workplace Learning

### Note

The above sample programs provide examples of course combinations for particular industry areas; however, these are a guide only.

Students should research and investigate the most appropriate combination of courses to assist in meeting their future education, training or employment prospects.

There are a range of endorsed programs which can contribute towards achievement of the WACE. These are classified as Authority-developed, School-developed or Provider-developed. Refer to the Authority website for the full listing of recognised endorsed programs.



## General advice for students

### Seek sound advice

- Collect relevant information about university, training and career options post-school. Find out about the courses and careers that interest you and check whether there are any prerequisites that you need to factor into your course selection.
- Talk with the people who know your skills, abilities and interests, as well as those who have a sense of your goals and aspirations. Your teachers, year coordinators, counsellors, principal, deputy principal, parents, family and friends are all useful sounding boards. Take the time you need to talk about the decisions you are making.

### Make wise choices

- Play to your strengths and build on your talents and skills. Choosing a subject on the basis of how you think it is scaled at the expense of one that you are good at or really enjoy doing may not pay the dividend you hope it will in the long run.
- Be passionate about what you are doing and work hard. It is worth bearing in mind that an easy option is not always the best option. When selecting your courses, balance being kind to yourself with offering yourself a challenge.
- Be positive and clear about your goals from the outset. You should review your goals from time to time to check how you are going in making progress.

### Establish good routines

- It is important to get into good habits early. Develop an effective routine that works for you and remember that you will need to be flexible as well as committed to it. Set yourself a regular schedule and map out your longer-term commitments.
- Strike a balance between your commitments and priorities, including study, family, friends, extra-curricular activities and part-time work. It is important to stay connected with your family and friends. Share your schedule and plans with your family and friends, so they understand your commitments and priorities.
- Remember healthy habits are part of good routines. Keep your energy levels in check by starting the day with a healthy breakfast and having regular meal times with a balanced and nutritious diet. Stay hydrated by drinking around two litres of water a day and avoiding caffeinated, sugary and energy drinks. Exercise to energise your body and mind, and take part in activities that will reduce stress and add balance to your life.

## Other information

### Student Information website

The Authority has a Student Information website that can be accessed via the Authority website home page and at <https://student.scsa.wa.edu.au/>.

The student website provides students with easy access to information under the headings of:

- Student Portal
- Getting Organised
- Curriculum
- Examinations and Testing
- Certification and Post-School
- Frequently Asked Questions (FAQs).

The student website currently focuses on Year 12s and links closely to the *Year 12 Information Handbook 2020, Part I*.

### Student Portal

The Student Portal is a space for Year 12 students to check and access personal information that relates to their WACE.

The Student Portal can be accessed at <https://student.scsa.wa.edu.au/student-portal>. Technical support for the portal is available via [wacehelp@scsa.wa.edu.au](mailto:wacehelp@scsa.wa.edu.au) (monitored from Monday to Friday between 8.00 am to 5.00 pm).

The student portal found at <https://studentportal.scsa.wa.edu.au> – is currently a space for Year 12 students to check and access personal information that relates to their WACE. Students in other years will be able to check their information in the portal soon.

You will be able to visit the portal to:

- check your personal details
- check your enrolments
- complete the student declaration and permission when you are in Year 12, or enrolled in a Year 12 course
- download a copy of approved special examination arrangements as a Year 12
- download a copy of the *Physical Education Studies practical examination information* – sport to be examined and skill level as a Year 12
- download a copy of the *Personalised practical examination timetable* which states the date, time and venue for each practical examination you need to attend as a Year 12
- download a copy of the *Personalised written examination timetable* which states the date, time and venue for each written examination you need to attend as a Year 12
- check your results as a Year 12
- download a copy of your sickness/misadventure outcome as a Year 12
- download a copy of your WASSA, WACE and/or ATAR Course Report.

You need to have your WA student number (WASN) – which you can find out through your school – and a password to access the student portal. When you visit the student portal for the first time you will be prompted to change your password.

Security restrictions mean information, such as your WASN, cannot be provided over the phone.

## Year 12 Information Handbook

The *Year 12 Information Handbook* is published each year. Part I, which contains information for all Year 12s, is published in March and Part II of the handbook, which focuses on ATAR course examinations is published in July. You'll find them at <https://www.scsa.wa.edu.au/publications/year-12-information>.

## WACE Checker

In Years 11 and 12 you will be able to use the WACE Checker to check your progress towards meeting the requirements of the WACE. It is designed to determine whether you have met (or are expected to meet) each of the requirements for the WACE. In 2020, there will be two versions of the WACE Checker in use.

If you want to use the WACE Checker when considering your course selections, make sure you use the version set for the WACE requirements for 2021 and beyond. You can test your choices by considering the grades you expect you would achieve and see how different combinations would help you meet the requirements. When using the WACE Checker, it is important to be realistic and positive about your projected performance, and also remember it is a guide.

## Social media

The Authority has two Facebook pages.

<https://facebook.com/SCSAWA> is for students in Years 10, 11 and 12, their parents, teachers and community stakeholders. The aim of the page is to provide information to students working towards the WACE and a WASSA, particularly in Year 12. It is also a way to contact us if you have questions.

<https://facebook.com/SCSAWateachers> is for teachers and community stakeholders. The aim of the page is to provide information to teachers delivering the Western Australian curriculum from Kindergarten to Year 12. Reminders about key dates, as listed in the *Activities Schedule*, are published on this page.

## Response times

The Authority's office hours are 8.00 am to 4.30 pm from Monday to Friday, excluding public holidays. Our social media accounts are formally monitored during these hours. A response to a question or comment may not be immediate, due to checking processes and other commitments. Decisions on out-of-hours responses are made on a case-by-case basis and are dependent on staff availability. We always do our best to respond to you within two working days.

## Community standards

We welcome your feedback, comments and questions through social media, but be aware that we moderate our Facebook pages.

The Authority treats its Facebook pages as 'family friendly' and has a zero tolerance approach to rude language and abusive or offensive posts. Comments and messages that are off-topic are treated as spam.

## Contact us

Students, teachers and stakeholders are encouraged to use the Authority's Facebook pages to access information and stay in touch with the Authority.

We also have an email if you prefer not to use social media. You can email us at [info@scsa.wa.edu.au](mailto:info@scsa.wa.edu.au).

## Parents and Community website

The Authority's parents and community website is designed to support parents and members of the community. It can be accessed on the Authority website at <https://www.scsa.wa.edu.au> via the Parents and Community tab.

The website has been developed for parents and community members as a guide to:

- the *Western Australian Curriculum and Assessment Outline* (the *Outline*), Kindergarten through to Year 10
- the Western Australian Certificate of Education (WACE), Years 11 and 12.

Parents and the community can access information about:

- what children and young people should learn
- how they are assessed
- the standards children and young people are expected to reach at each year level.

## Appendix 1: List A and List B subjects

To ensure an appropriate breadth-of-study in your senior secondary studies, you are required to select **at least one** Year 12 course unit **from each** of List A and List B subjects.

List A (arts/languages/social sciences)		List B (mathematics/science/technology)	
AIS	Aboriginal and Intercultural Studies	ACF	Accounting and Finance
ABL	Aboriginal Languages of Western Australia	APS	Animal Production Systems
HIA	Ancient History	AIT	Applied Information Technology
ARA	Arabic <sup>#</sup>	AET	Automotive Engineering and Technology
AUS	Auslan <sup>#</sup>	AVN	Aviation
BME	Business Management and Enterprise	BLY	Biology
CAE	Career and Enterprise	BCN	Building and Construction
CFC	Children, Family and the Community	CHE	Chemistry
CBL	Chinese: Background Language <sup>#</sup>	CSC	Computer Science
CFL	Chinese: First Language <sup>#</sup>	DES	Design
CSL	Chinese: Second Language	EES	Earth and Environmental Science
DAN	Dance	EST	Engineering Studies
DRA	Drama	FST	Food Science and Technology
ECO	Economics	HBV	Human Biology
ENG	English	HPO	Health, Physical and Outdoor Education
ELD	English as an Additional Language or Dialect	ISC	Integrated Science
FBL	French: Background Language <sup>#</sup>	MMS	Marine and Maritime Studies
FSL	French: Second Language	MDT	Materials Design and Technology
GEO	Geography	MAT	Mathematics
GBL	German: Background Language <sup>#</sup>	MAA	Mathematics Applications
GSL	German: Second Language	MAE	Mathematics Essential
HEA	Health Studies	MAM	Mathematics Methods
HEB	Hebrew <sup>#</sup>	MAS	Mathematics Specialist
IFL	Indonesian: First Language <sup>#</sup>	OED	Outdoor Education
IND	Indonesian: Second Language	PES	Physical Education Studies
ITB	Italian: Background Language <sup>#</sup>	PHY	Physics
ISL	Italian: Second Language	PPS	Plant Production Systems
JBL	Japanese: Background Language <sup>#</sup>	PSY	Psychology
JFL	Japanese: First Language <sup>#</sup>		
JSL	Japanese: Second Language		
LIT	Literature		
MBS	Malay: Background Speakers		
MPA	Media Production and Analysis		
GRE	Modern Greek <sup>#</sup>		
HIM	Modern History		
MUS	Music		
PAE	Philosophy and Ethics		
PAL	Politics and Law		
POL	Polish <sup>#</sup>		
REL	Religion and Life		
RUS	Russian <sup>#</sup>		
TUR	Turkish <sup>#</sup>		
VAR	Visual Arts		

<sup>#</sup>To count as a List A course these languages must be studied at a registered school/provider or at a community organisation through a registered school or provider. Where a student is enrolled in the examination for one of these languages as a non-school candidate the course does not count for the WACE unit completion or breadth of study requirements.

## Appendix 2: Other information you may wish to access

### Courses – Year 11 and 12

<http://senior-secondary.wa.edu.au/syllabus-and-support-materials>

### Disability adjustments

<http://senior-secondary.scsa.wa.edu.au/assessment/disability-adjustment-guidelines>

### Eligibility criteria for languages and EAL/D courses

<http://senior-secondary.scsa.wa.edu.au/syllabus-and-support-materials/languages>

### Endorsed programs

<http://senior-secondary.scsa.wa.edu.au/syllabus-and-support-materials/endorsedprograms>

### Online Literacy and Numeracy Assessment (OLNA)

<http://senior-secondary.scsa.wa.edu.au/assessment/olna>

### School-based assessment

<http://senior-secondary.scsa.wa.edu.au/assessment/school-based-assessment>

### Vocational Education and Training (VET)

<http://senior-secondary.scsa.wa.edu.au/vet>

- VET industry specific courses
- VET credit transfer
- How VET contributes to the WACE
- WACE recognition of VET accredited courses
- News and Frequently asked questions <http://senior-secondary.scsa.wa.edu.au/vet/faqs>

### The Western Australian Certificate of Education (WACE)

<http://senior-secondary.scsa.wa.edu.au/the-wace>

### ATAR examinations

<http://senior-secondary.scsa.wa.edu.au/assessment/examinations>

- Examination information
- University entrance
- Special provisions

### Past ATAR course examinations

<http://senior-secondary.scsa.wa.edu.au/further-resources/past-atar-course-exams>

### Past WACE examinations

<http://senior-secondary.scsa.wa.edu.au/further-resources/past-wace-examinations>

### WASSA (Western Australian Statement of Student Achievement)

<http://senior-secondary.scsa.wa.edu.au/certification/wassa>





